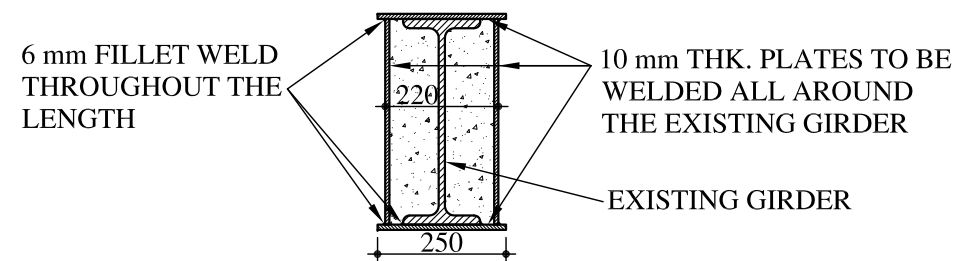
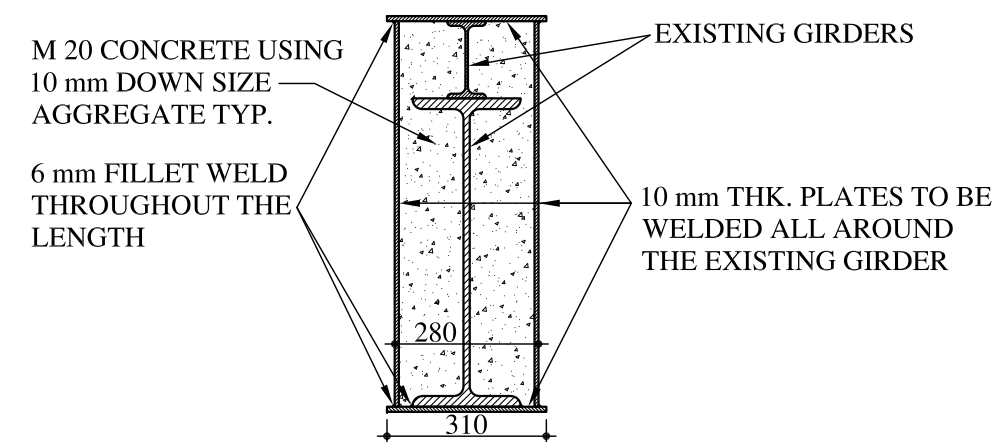


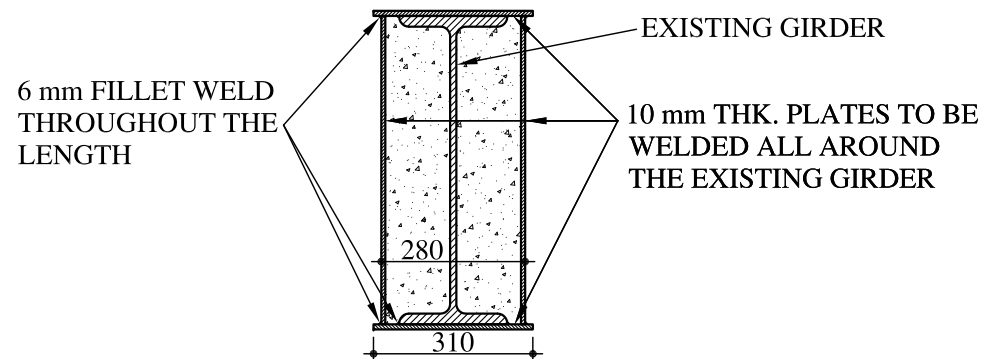
SECTION "A - A" (B1 & PART OF B2 SUPPORTING THE PUMP MOTOR)  
(SCALE: 1:15)



SECTION "B - B" (PART OF B2 NOT SUPPORTING THE PUMP MOTOR)  
(SCALE: 1:15)



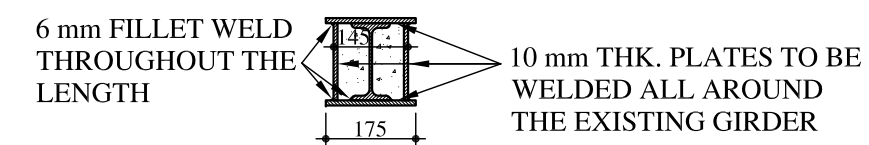
SECTION "C - C" (PART OF B3 SUPPORTING THE PUMP MOTOR)  
(SCALE: 1:15)



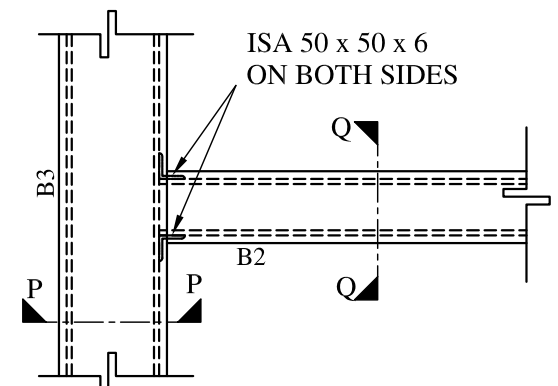
SECTION "D - D" (PART OF B3 NOT SUPPORTING THE PUMP MOTOR & B4,B5)  
(SCALE: 1:15)

**NEW STEEL BEAM SCHEDULE:-**

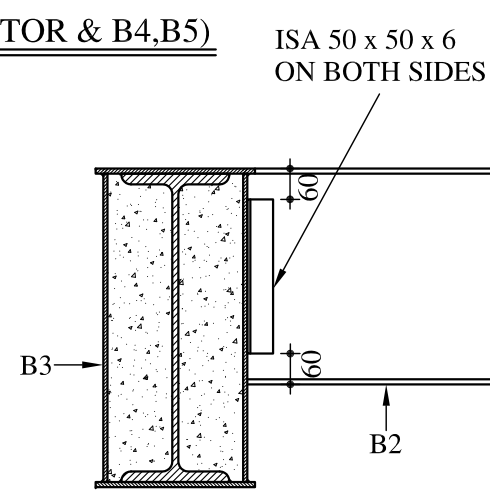
BEAM NO.	SECTION
B8	ISMB 200 @ 25.4 Kg/m
B9	ISMB 150 @ 14.9 Kg/m



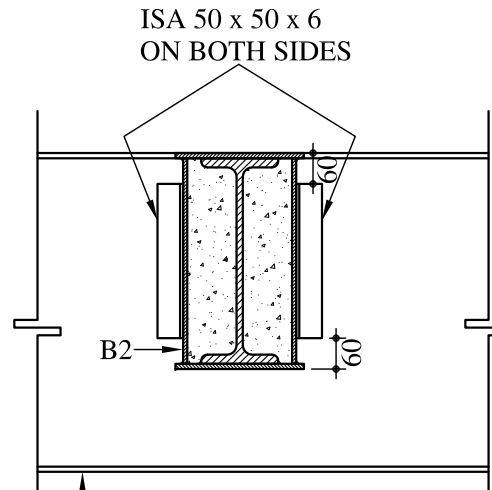
SECTION "E - E" (B6,B7)  
(SCALE: 1:15)



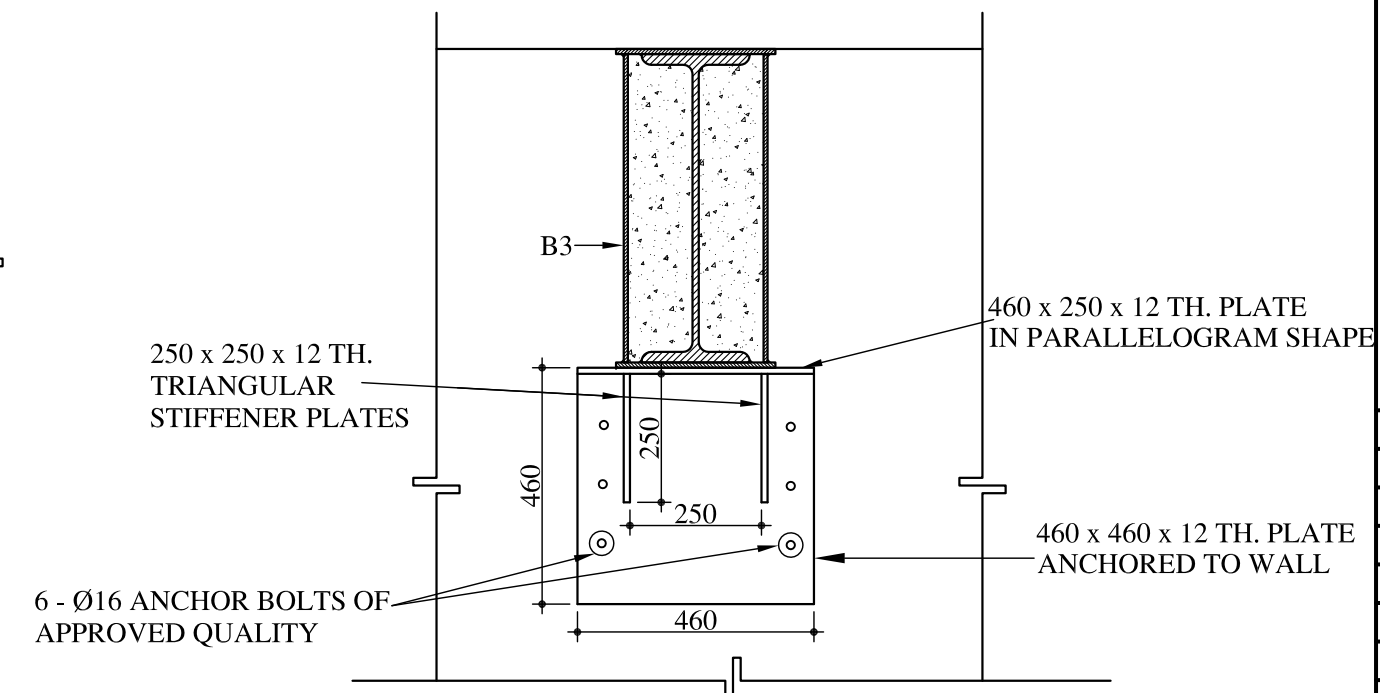
DETAIL 'X' (TYP. BOX TO BOX CONNECTION)  
(SCALE: 1:15)



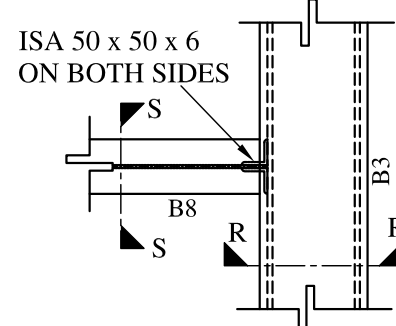
SECTION "P - P"  
(SCALE: 1:15)



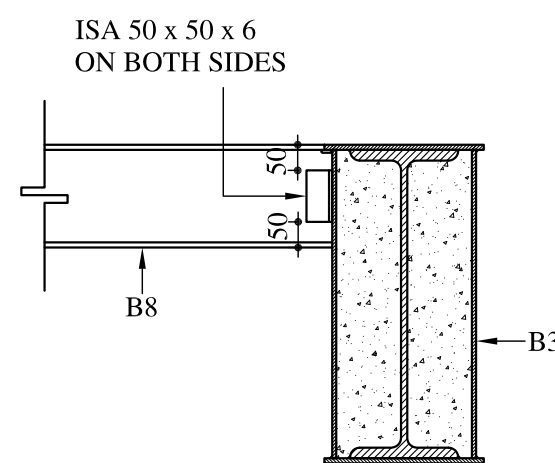
SECTION "Q - Q"  
(SCALE: 1:15)



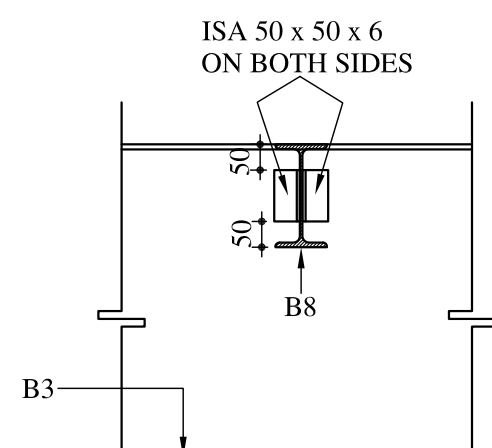
SECTION "V - V"  
(SCALE: 1:15)



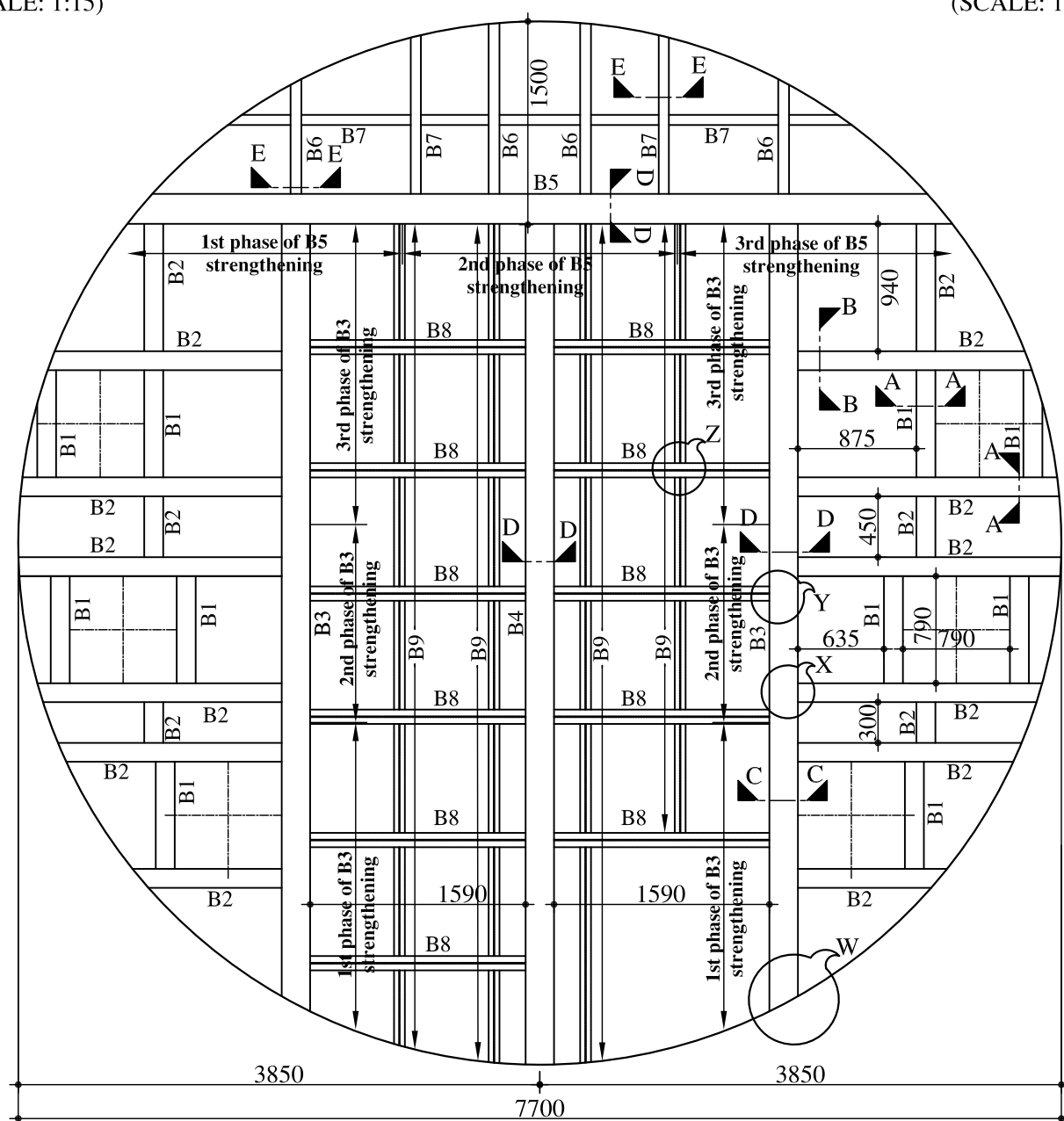
DETAIL 'Y' (TYP. BOX TO GIRDER CONNECTION)  
(SCALE: 1:15)



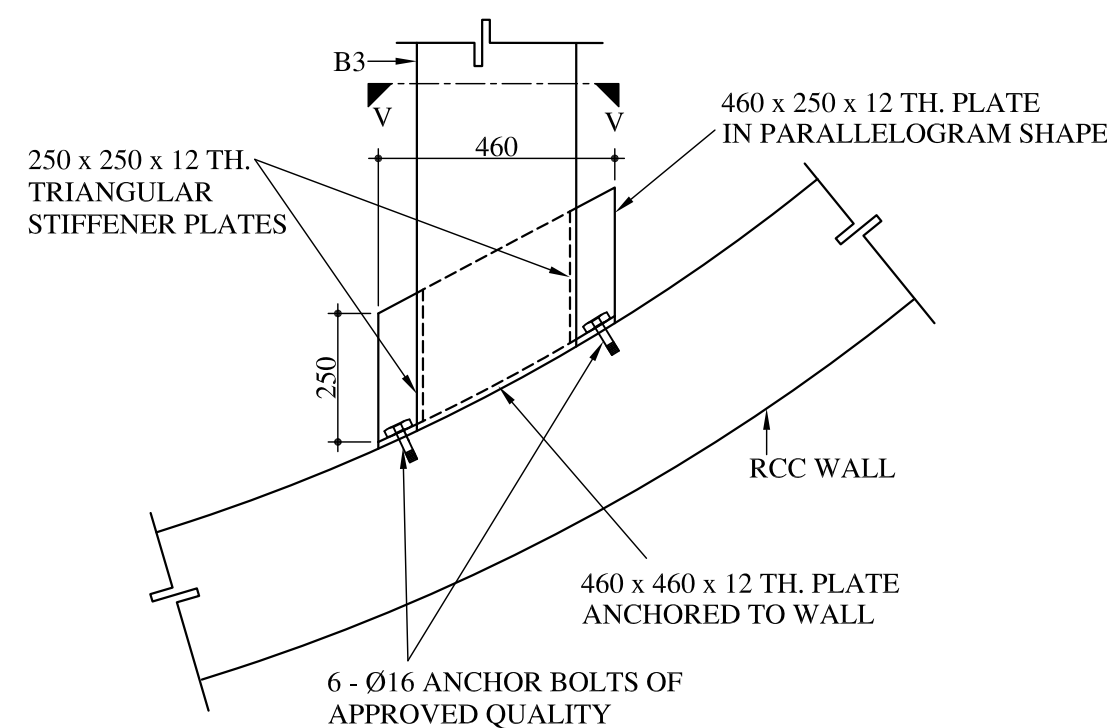
SECTION "R - R"  
(SCALE: 1:15)



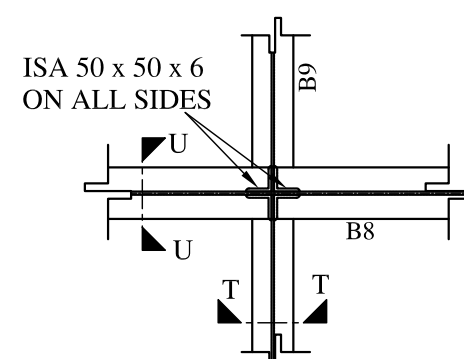
SECTION "S - S"  
(SCALE: 1:15)



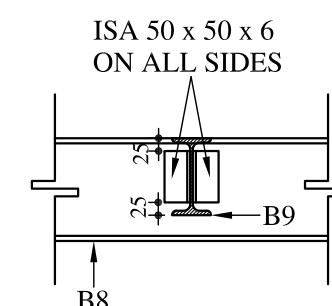
FRAMING PLAN FOR FLOOR STRENGTHENING SYSTEM  
(SCALE: 1:50)



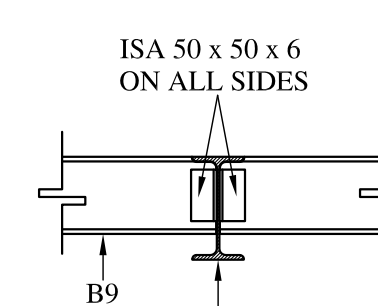
DETAIL "W" (TYP. BOX TO RCC WALL CONNECTION)  
(SCALE: 1:15)



DETAIL "Z" (TYP. GIRDER TO GIRDER CONNECTION)  
(SCALE: 1:15)



SECTION "T - T"  
(SCALE: 1:15)



SECTION "U - U"  
(SCALE: 1:15)

**NOTES:-**

- 1) ALL DIMENSIONS ARE IN mm.
- 2) ALL WELDING SHALL BE FILLET WELD OF SIZE 6 mm AND WELDING TO BE DONE ALL AROUND THE SECTION.
- 3) ALL STRUCTURAL STEEL ROLLED SECTIONS AND PLATES SHALL CONFORM TO IS : 226 - 1975 AND IS : 2062 - 1984
- 4) WELDING SHALL CONFORM TO IS : 816 - 1969
- 5) ALL ELECTRODES SHALL CONFORM TO IS : 814 (PART - I) - 1974
- 6) ALL M.S. FITTED BOLTS AND NUTS SHALL CONFORM TO IS : 3694 - 1982
- 7) WASHERS SHALL CONFORM TO IS : 5369 - 1975, IS : 5370 - 1969, IS : 5372 - 1975 OR IS : 5374 - 1975
- 8) DIMENSIONS ARE TO BE READ AND NOT MEASURED.
- 9) ANY DISCREPANCY SHALL BE BROUGHT TO THE NOTICE OF THE ENGINEER IN CHARGE, BEFORE FURTHER PROGRESS OF THE WORK.

REV. NO.	REV. DATE	REVISION DETAILS	APPD. BY

DRAWN BY:-		NAME	SIGN	DATE

CHECKED BY:-

APPROVED BY:-

PRINCIPAL CLIENT :-

PROJECT TITLE:-

DRG. NO.

**DRAWING TITLE:-**  
STRENGTHENING OF FLOOR SUPPORTING SYSTEM FOR DAM VALVE TOWER

**LAKHLANI ASSOCIATES**  
CIVIL AND STRUCTURAL ENGINEERS

SHREE SOCIETY MAIN ROAD  
Nr. SURYAMUKHI HANUMAN TEMPLE  
NANA MAVA MAIN ROAD  
NEXT TO VIVEKANAND SCHOOL  
RAJKOT - 360 001  
PHONE : +91 281 247 51 60  
E-mail : contact@lakhani.com  
Web : www.lakhani.com